

# PLAN C

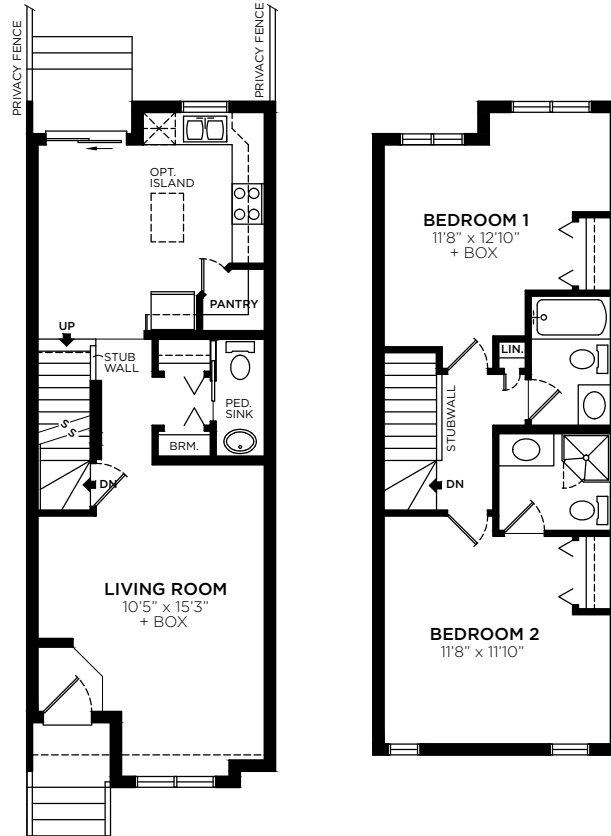
## TOWNHOME UNIT

1159 SQ. FT.

2 BEDROOM + 2.5 BATHS

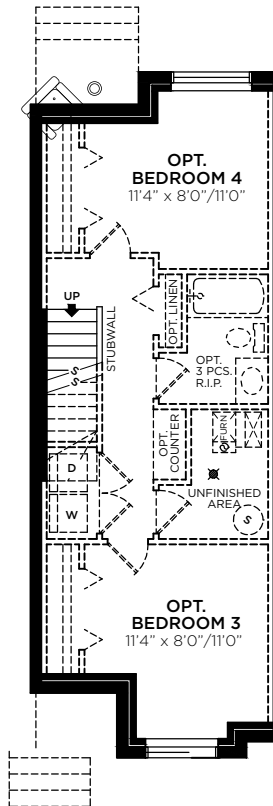
WITH BASEMENT: 1598 SQ.FT.

4 BEDROOMS + 3.5 BATHS



**MAIN FLOOR**  
600 SQ. FT.

**UPPER FLOOR**  
559 SQ. FT.



**BASEMENT**  
(OPTIONAL DEV.)  
439 SQ. FT.

*The overall unit floor plan area is calculated from the outside of exterior framing wall to the centre of party wall at floor level. Please note, a different measurement methodology may apply for the purpose of the Condominium Property Act than has been utilized for the purpose of this drawing. See disclosure documents. The developer reserves the right to make modification or substitutions without notice.*

**SALES REPRESENTATIVE**

403.390.9310

SALES@REACHMARTINDALE.COM