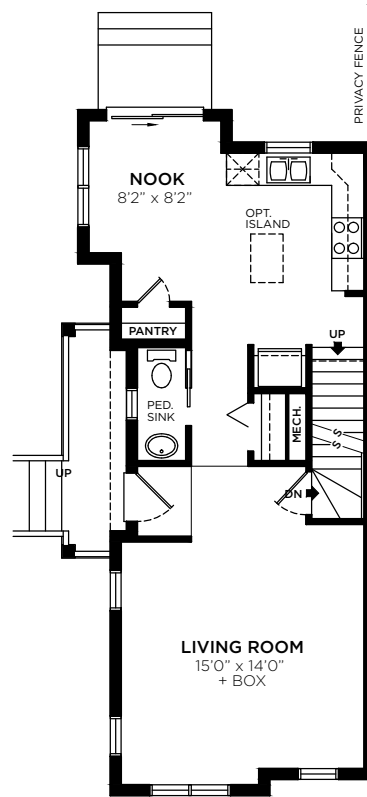


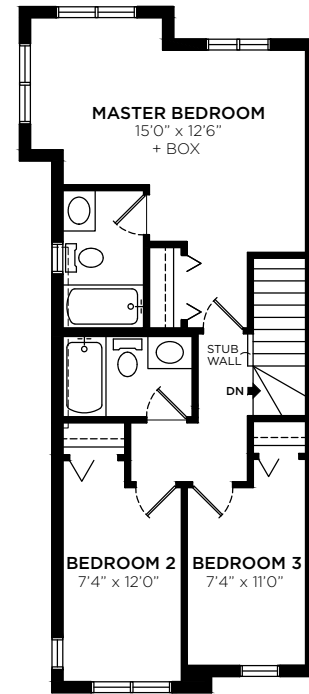
# PLAN A

## TOWNHOME UNIT

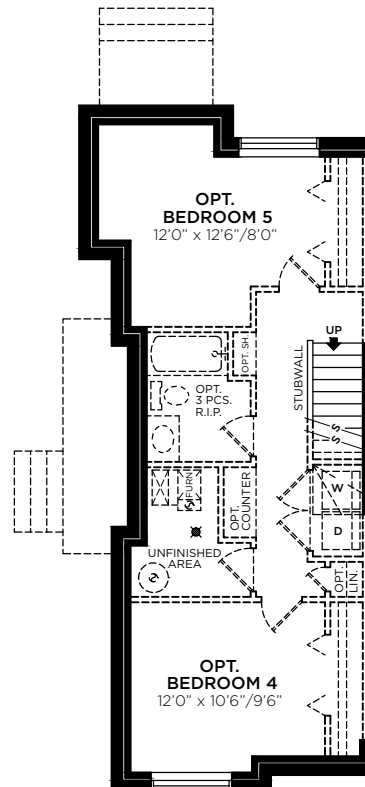
**1315 SQ. FT.**  
**3 BEDROOM + 2.5 BATHS**  
**WITH BASEMENT: 1797 SQ.FT.**  
**5 BEDROOMS + 3.5 BATHS**



**MAIN FLOOR**  
 669 SQ. FT.



**UPPER FLOOR**  
 646 SQ. FT.



**BASEMENT**  
 (OPTIONAL DEV.)  
 482 SQ. FT.

*The overall unit floor plan area is calculated from the outside of exterior framing wall to the centre of party wall at floor level. Please note, a different measurement methodology may apply for the purpose of the Condominium Property Act than has been utilized for the purpose of this drawing. See disclosure documents. The developer reserves the right to make modification or substitutions without notice.*

**SALES REPRESENTATIVE**  
 403.390.9310  
 SALES@REACHMARTINDALE.COM

